

CONCRETE EQUIPMENT



OMNIMAQ



A FERREYCORP COMPANY

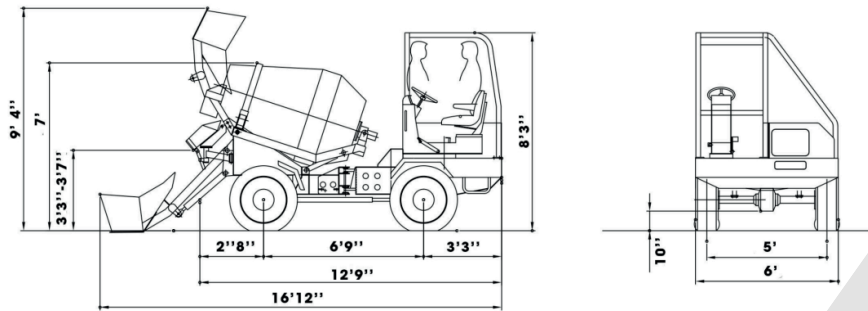
SMALL CONCRETE MIXER

CARMIX ONE

TECHNICAL FEATURES

DRUM CAPACITY	370 gal
CONCRETE DRUM OUTPUT	1.3 yd ³ per cycle
PERKINS STAGE V	Tier 4F 403J-E17T Turbo-diesel, 4 cylinders, 36 Kw (48 Hp).
ADDITIONALS	Reversible driving seats. Electronic weighing system "Load Cells"

DIMENSIONS



Illustrative image. Specifications may vary.

OFF ROAD MOBILE BATCHING PLANT

CARMIX 2.5TT

TECHNICAL FEATURES

DRUM CAPACITY

911 gal

CONCRETE DRUM OUTPUT

3.3 yd³ per cycle

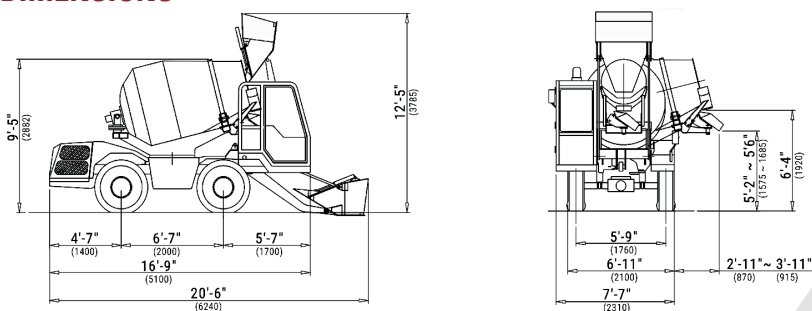
PERKINS STAGE V

Tier 4F 904J-E36TA Turbo-diesel,
55,4 Kw (74 Hp).

ADDITIONALS

Articulated loader with hydraulic
door. Electronic weighing system
"Load Cells"

DIMENSIONS



Illustrative image. Specifications may vary.

BLEND MODEL

E015

TECHNICAL FEATURES

AGGREGATES	4.6 yd ³
CEMENT	1.4 yd ³
WATER	145 gal
EMULSION	80 gal (opt.)
ADMIXTURES	3x11 gal (opt.)
OUTPUT*	≤46 yd ³ /h
POWER**	27Kw PTO
EMPTY WEIGHT	3.700 Lb - 3.020 Lb
DIMENSIONS	11.7 x 6.5 x 4.7 ft



***PRODUCTION DEPENDS ON THE TYPE OF MIX AND MATERIAL LOGISTICS.**

****STANDALONE VERSION: CAN OPERATE WITH OR WITHOUT A TRUCK. TRUCK NOT INCLUDED.**

Illustrative image. Specifications may vary.

BLEND MODEL

E050

TECHNICAL FEATURES

AGGREGATES	13 yd ³
CEMENT	4.2 yd ³
WATER	500/1000 gal (opt.)
EMULSION	160 gal (opt.)
ADMIXTURES	3x11 gal (opt.)
OUTPUT*	≤65 yd ³ /h
POWER**	44Kw PTO
EMPTY WEIGHT	8.050 Lb - 7.100 Lb
DIMENSIONS	18.5 x 7.4 x 7.5 ft



***PRODUCTION DEPENDS ON THE TYPE OF MIX AND MATERIAL LOGISTICS.**

****STANDALONE VERSION: CAN OPERATE WITH OR WITHOUT A TRUCK. TRUCK NOT INCLUDED.**

Illustrative image. Specifications may vary.

BLEND MODEL

SEVENTY

TECHNICAL FEATURES

AGGREGATES	16 yd ³
CEMENT	4.2 yd ³
WATER	500/1000 gal (opt.)
EMULSION	160 gal (opt.)
ADMIXTURES	3x11 gal (opt.)
OUTPUT*	≤65 yd ³ /h
POWER**	44Kw PTO
EMPTY WEIGHT	8.200 Lb - 7.400 Lb
DIMENSIONS	20 x 7.4 x 7.5 ft



***PRODUCTION DEPENDS ON THE TYPE OF MIX AND MATERIAL LOGISTICS.**

****STANDALONE VERSION: CAN OPERATE WITH OR WITHOUT A TRUCK. TRUCK NOT INCLUDED.**

Illustrative image. Specifications may vary.



A FERREYCORP COMPANY



(305) 522 - 5621



info@omnimaq.com



[Omnimaq](#)



[Omnimaq](#)



[Omnimaq](#)



12200 NW 25th St #103, Miami, FL 33182, United States



www.omnimaq.com